

# THE WAND COMPANY

## Pip-Boy 3000 Mk V replica

### SD card replacement guide

#### Tools required:

- Size 1 Phillips screwdriver

#### Steps:

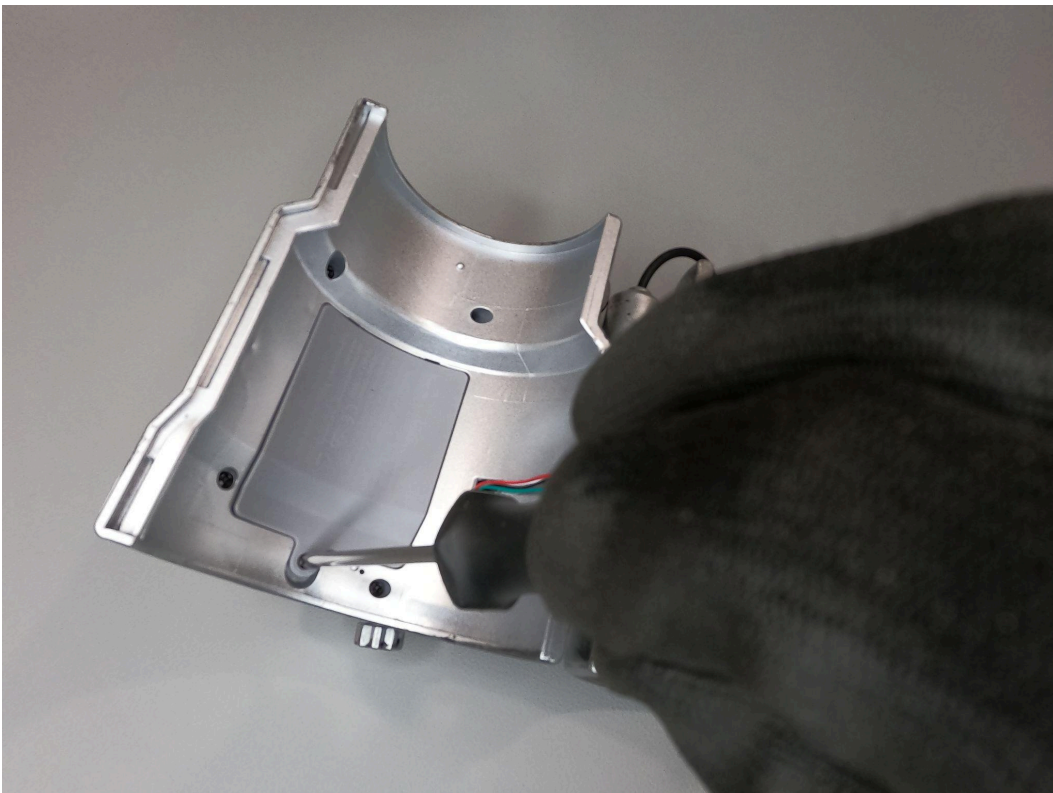
1. Lift out the padded cuff on the display side of the Pip-Boy



2. Lift out the black plastic cover sheet



3. With the size 1 Phillips screwdriver, remove the battery compartment screw

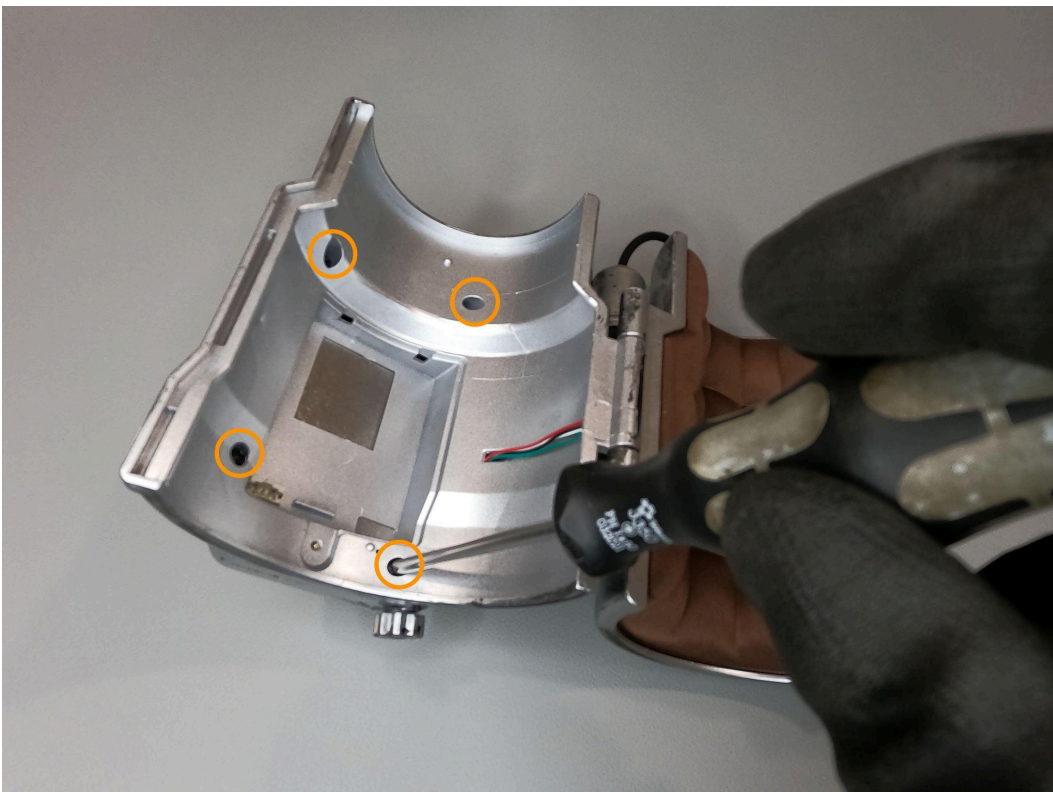




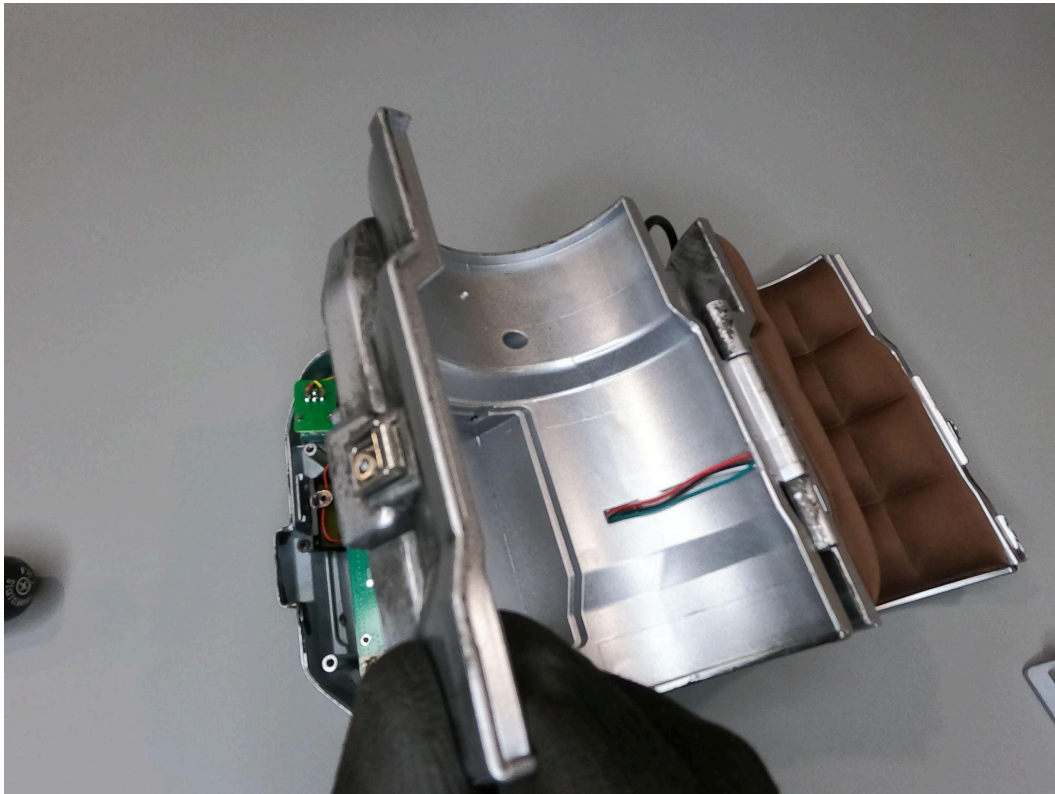
4. Open the battery compartment and lift out the battery, making a note of its orientation and the position of the wires – they're a tight fit when re-fitting the battery



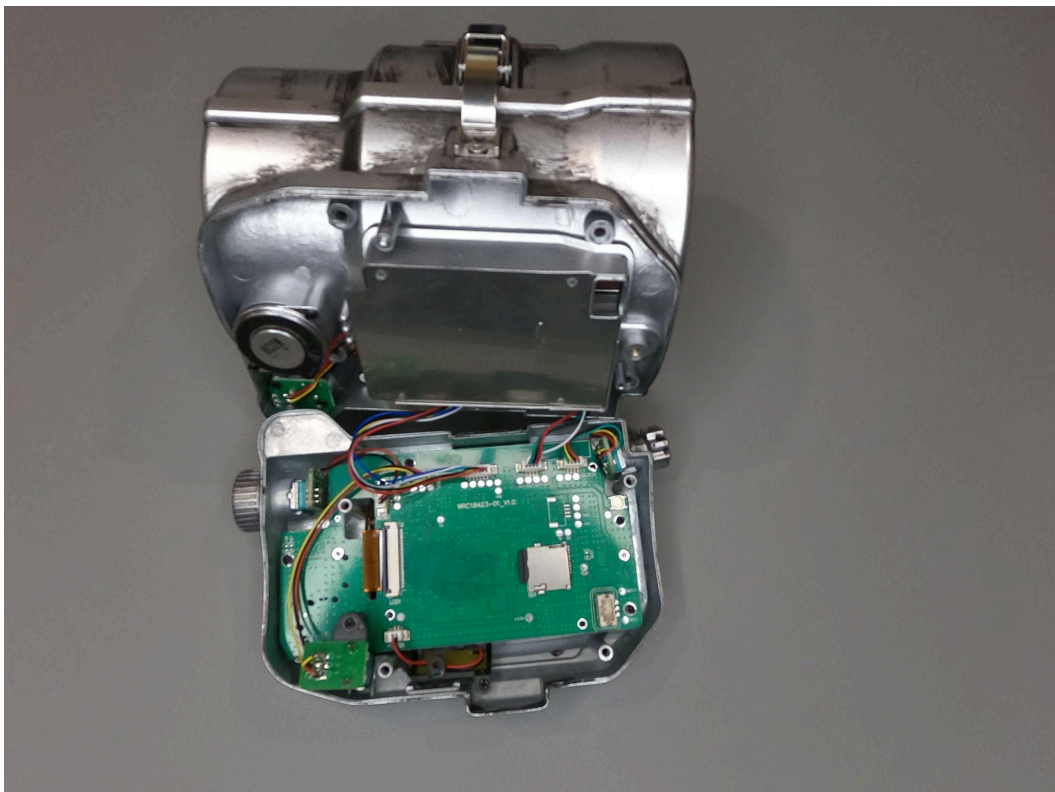
5. Remove the other four visible screws



6. Lift the battery compartment away from the front of the Pip-Boy, taking care not to damage any of the wires (which are towards the hinge side)

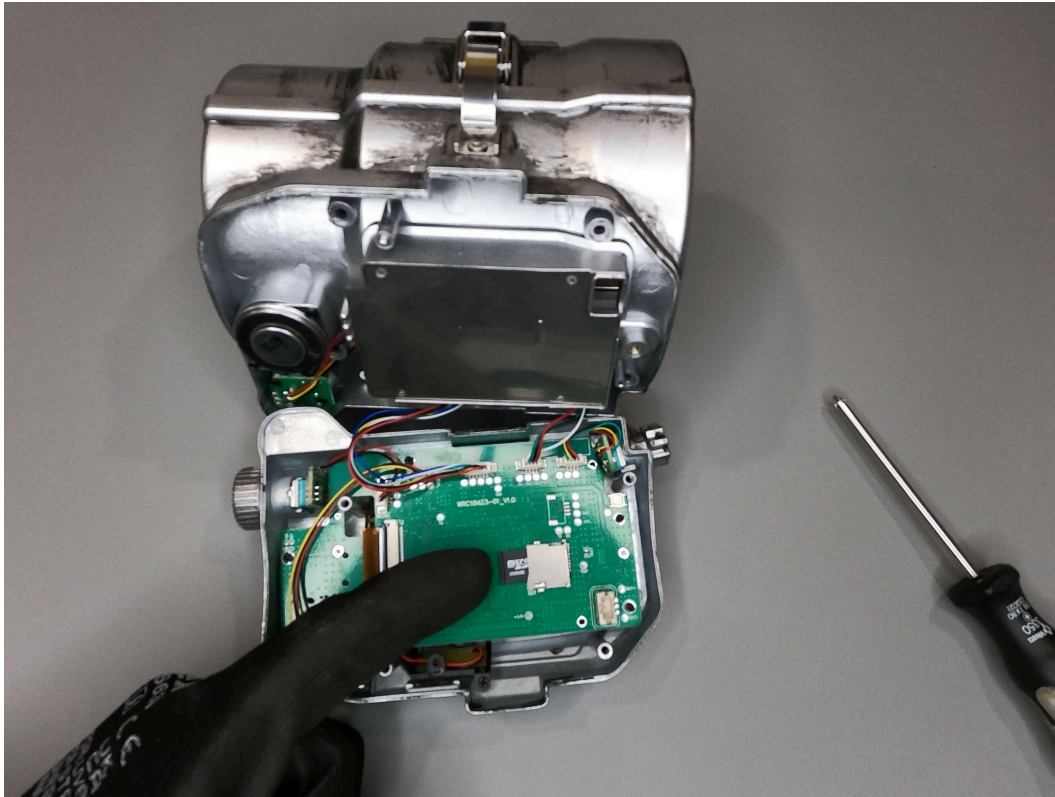


7. The SD card will now be visible





8. Push the tip of the SD card to eject it from the metal holder



9. Insert the new SD card, pushing into place until it clicks.
10. Reassemble the Pip-Boy, taking care not to trap any wires between the front and rear sub-assemblies.